

LCL35G

CRESCENT
Lufkin[®]



EN User Instructions for cross line laser

SAFETY INSTRUCTIONS

Read the operating instructions carefully before use.

Save these instructions for future reference.

Persons who are not familiar with these instructions should not use the instrument.

NOTE:



EN60825-1:2014

Power $P < 1\text{mW}$

Wavelength $\lambda = 532\text{nm}$

- The instrument complies with laser class II. Do not point the laser beam at people or animals.
- Do not look into the laser beam directly or through optical instruments.
- Do not remove or damage the stickers on the instrument.
- Never attempt to modify the instrument to increase the laser power.
- Do not point the laser beam at reflecting surfaces that can reflect the beam back towards the user. The laser beam can cause permanent eye damage.

TECHNICAL DATA

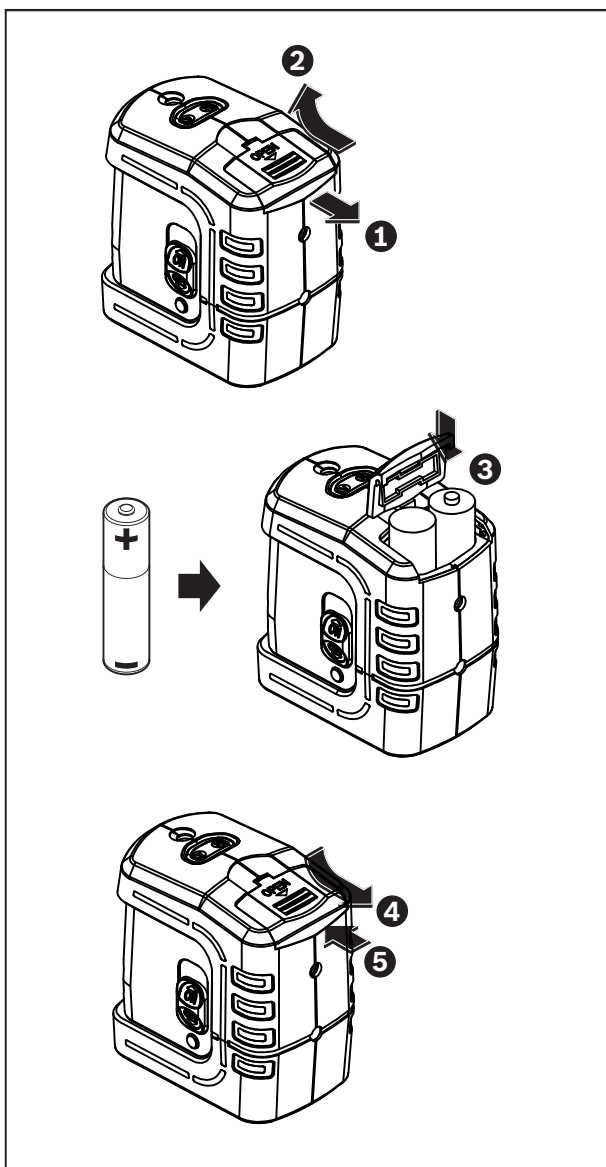
Laser type	Class 2, 532 nm wavelength
Working range	8 m (typical, depends on lighting conditions)
Accuracy	$\pm 0.5\text{ mm/m}$
Auto-levelling range	4°
Levelling time	$< 5\text{ s}$
Working temperature	$5\text{--}35^\circ\text{C}$
Storage temperature	$-5\text{--}45^\circ\text{C}$
Batteries	2 x 1.5 V AA
Weight	about 180 g
Dimensions	70 x 46 x 80 mm

WARNING!

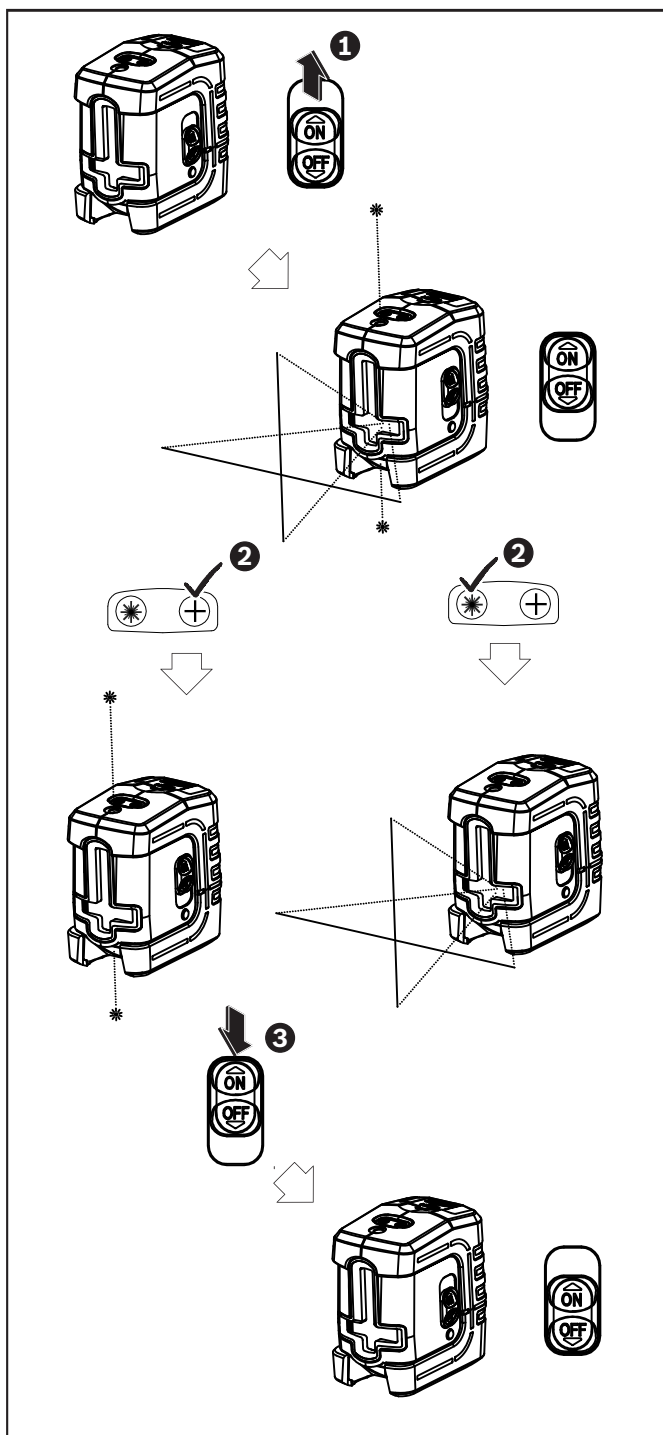
- Do not use the instrument in sunlight or similar bright lighting conditions.
- Do not open the instrument with tools, unless there are specific instructions on how to do this.
- Do not use the instrument for applications other than those stated.

- Never connect the instrument to a power source that differs from the specified voltage.
- Do not immerse the instrument in water.
- Do not use alcohol or other organic solvents to clean the lens.
- Do not drop the instrument during use. This may cause inaccuracy.

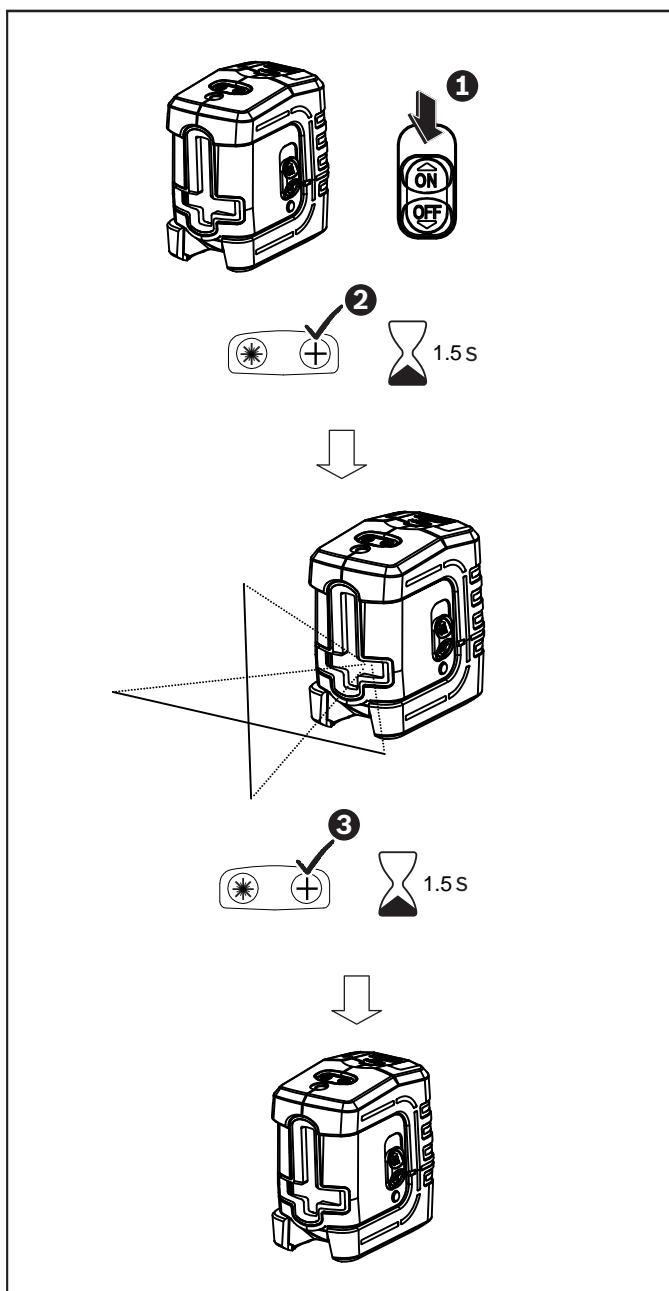
OPERATION



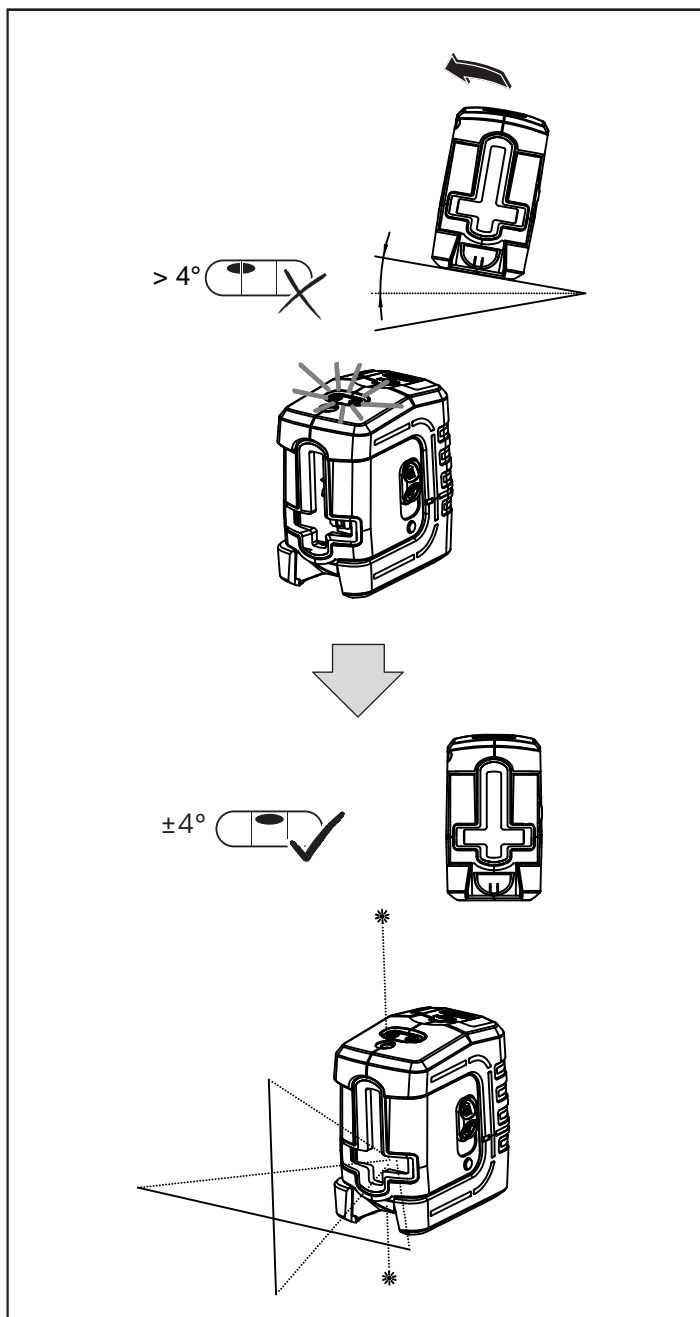
1. Insert the batteries



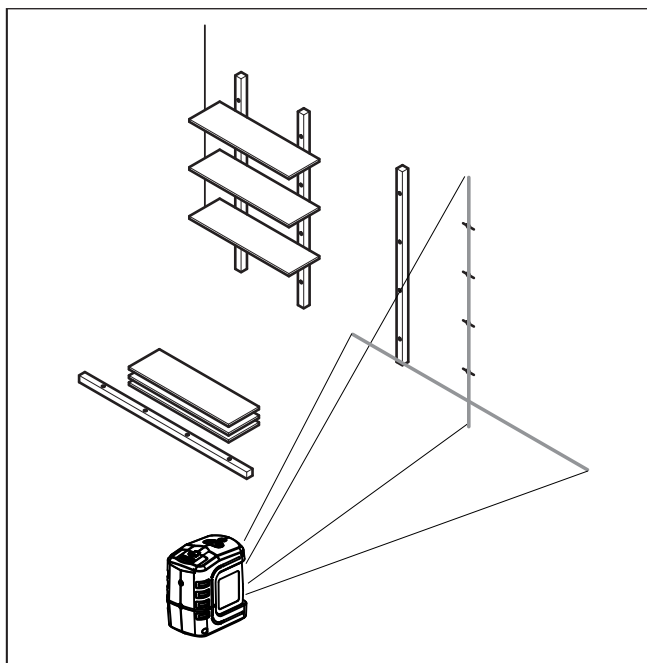
2. Auto-levelling laser lines



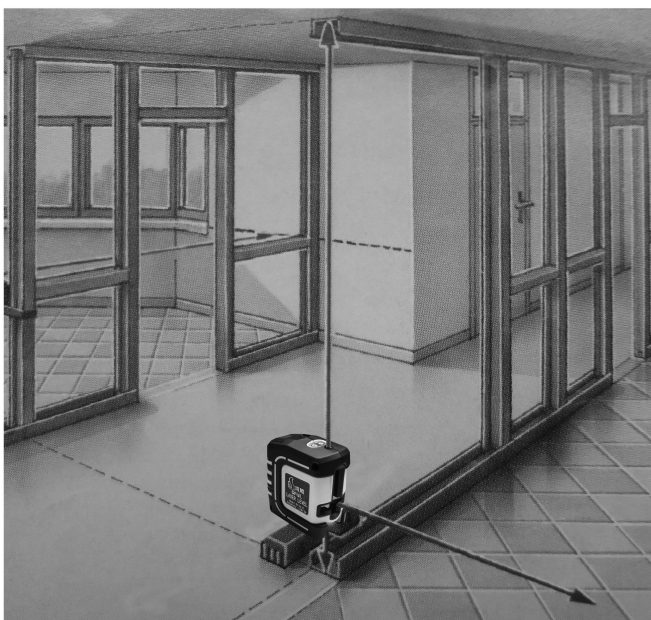
3 Freely aligned laser liners



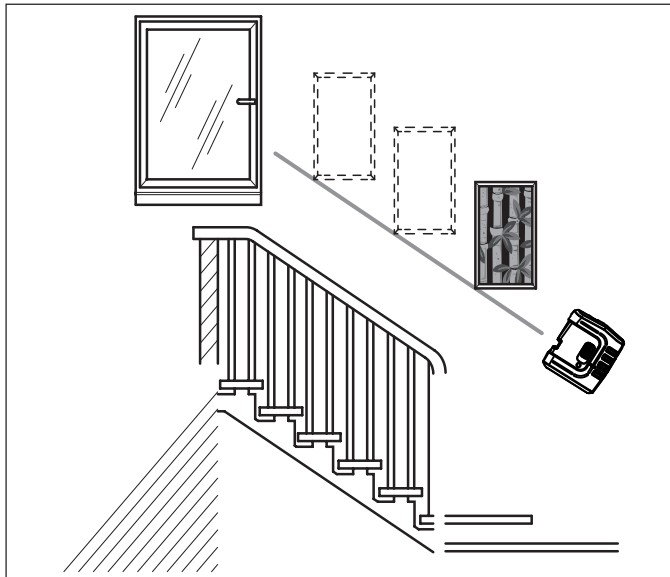
4. Auto-levelling range



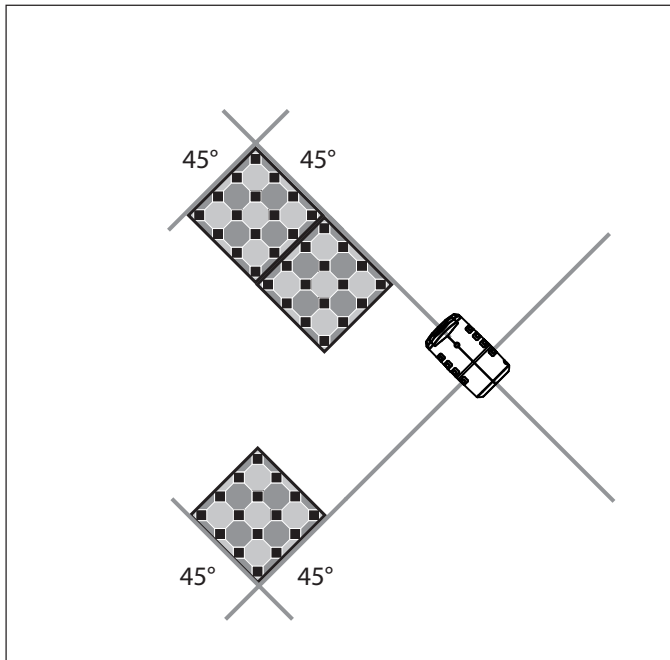
5a. Example application of auto-levelling laser lines



5b. Example application of auto-levelling laser plumb



6a. Example application of freely aligned laser lines



6b. Example application of freely aligned laser lines

Apex Tool Group Pty Limited
519 Nurigong Street, Albury
NSW 2640, AUSTRALIA

Tel: Sales 02 6021 6666
Fax: Sales 1800 021 940
Alburysales@apextoolgroup.com
www.apextoolgroup.com.au

